

FUNKY FRESH SUNNINGDALE WEST

Anything but ordinary, interior design consultant Rebecca Khouri kicked this suburban home up a notch with a sophisticated floor plan paired with the home owners' desire for accents that pack a punch. Every room in the home holds a different surprise and an explosion of colour, creating a dynamic and exciting space.



A two-storey family room was a part of the criteria when the home owners chose the plan to build with Mike Harasym Homes. Full length motorized drapes from Blinds by Design add drama from every room of the house, while white marble coffee and end tables from Quantum add an earthy element to ground the space.



Red accents reinforce the idea that the kitchen is the heart of the home. A beautifully ornate, furniture-style island is paired with contemporary hydraulic, red lucite stools from Italy. Black granite completes the look for a sleek finish.



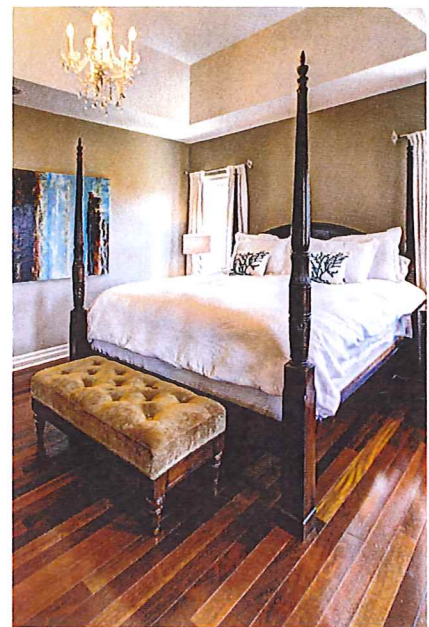
With perfect pitch, this room harmonizes the contemporary feeling of the turquoise love seat from Quantum with the elegance of jacquard pseudo-wing chairs from Pier 1 Imports, finishing off with a mirrored coffee table and custom painted art work by local artist Steve Tracy.



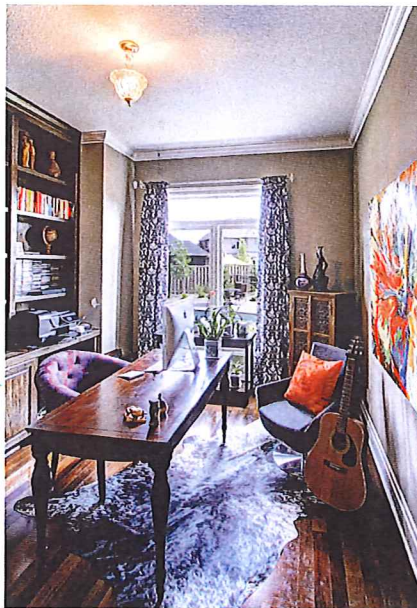
Matching draperies and canopy by Blinds by Design make this four-year-old's bedroom a dream come true. A bathroom with two sink areas combines this room with the neighbouring baby's room.



Using the same drapery fabric as the other child's room ties rooms together and completes the window seat area, affording a spectacular view to the backyard from the rocking chair.



Simple furniture choices in the high-ceilinged master bedroom provide a cool, comfortable and relaxing atmosphere for much needed rest with a young family.



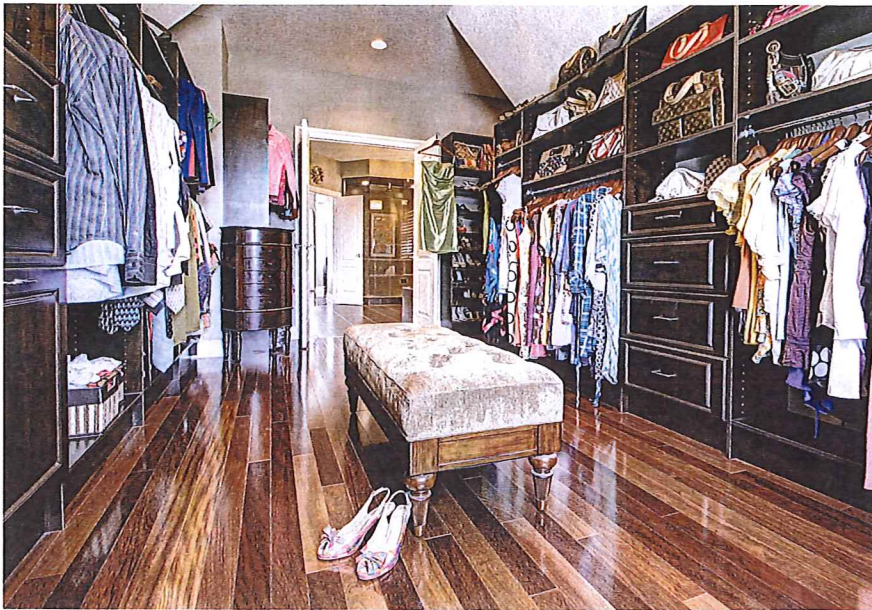
The wall of built-ins, minimal furnishings and colourful art allows the homeowner to showcase a well-travelled feel in this home office. The cowhide rug from Quantum grounds the space while showcasing the amazing flooring.



This custom-designed dining table by McKaskell Haindl is teamed with traditionally styled chairs with black and white fabric backs. This mixture of traditional and non-traditional furniture, complete with Buddha paintings by Steve Tracy, combine to offer an East Indian flavour to the home.



Unique built-ins free up floor space, giving this family room a light and airy feel and affording necessary storage for a young family.



Pre-fabricated organizational pieces were combined to make this the ultimate dressing room for the husband and wife. Classic bench and small furniture pieces complete the area to free space in the bedroom.



The ensuite boasts a walk-in tiled shower and two separate vanities (as shown in mirror) for husband and wife. The mirrors mirror the window size to provide a symmetry that complements the water-colour Koi paintings by Steve Tracy.



A resort-feel is developed in the back yard with this in-ground pool and casual patio furniture. Trees have been planted in this new subdivision, and as the young family grows, so do the landscaped trees.